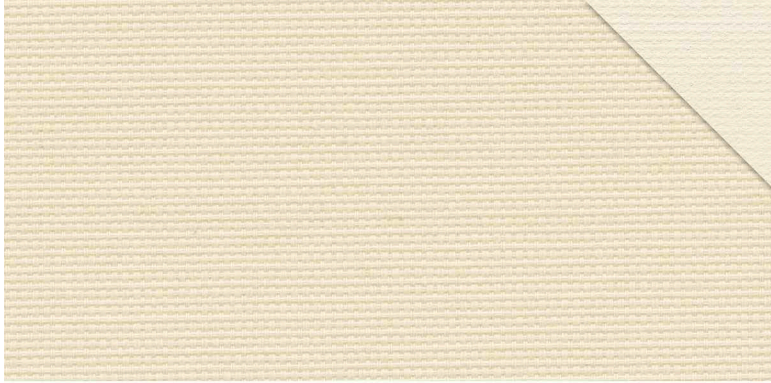


LUNA BLACK-OUT COLOUR

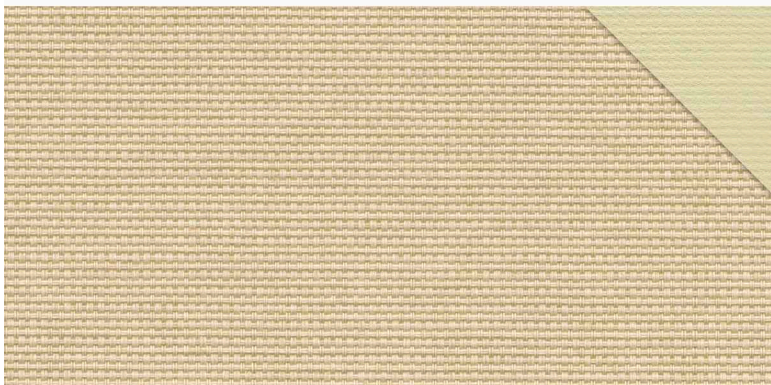
1048 Base-Line



2490 cream



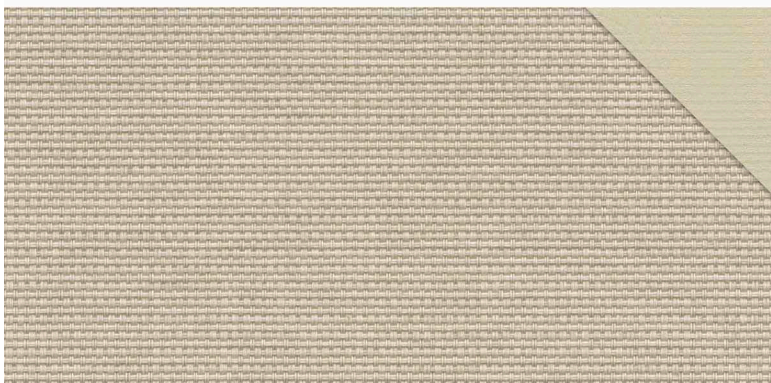
9191 light grey



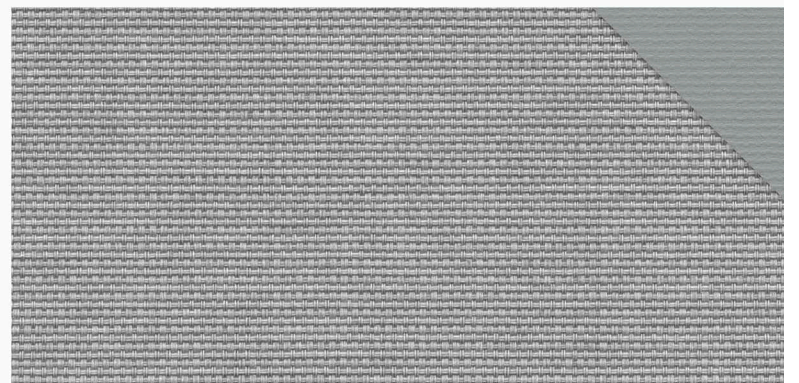
2326 bleached sand



9322 steel



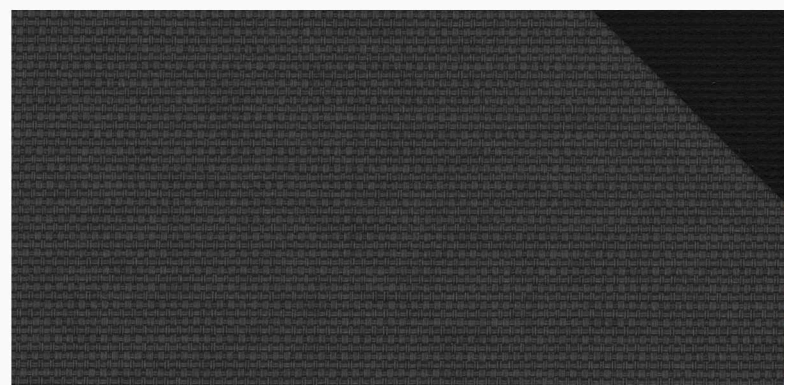
2323 sand



9193 silver



9197 iron



9192 black

LUNA BLACK-OUT COLOUR 1048

Number	Colour	Width mm		Light Properties			Solar Properties			Light Fastness	UV-Transm.	Gtot - value	FC - value
		2000	3000	R	T	A	R	T	A				
2490	cream	✓	✓	68%	0%	32%	69%	0%	31%	6-7	0%	0,34	0,58
9191	light grey	✓	✓	55%	0%	45%	53%	0%	47%	6-7	0%	0,39	0,66
2326	bleached sand	✓	✓	51%	0%	49%	49%	0%	51%	6-7	0%	0,41	0,69
9322	steel	✓	✓	35%	0%	65%	36%	0%	64%	6-7	0%	0,45	0,76
2323	sand	✓	✓	44%	0%	56%	42%	0%	58%	6-7	0%	0,43	0,73
9193	silver	✓	✓	28%	0%	72%	25%	0%	75%	6-7	0%	0,49	0,83
9197	iron	✓	✓	12%	0%	88%	9%	0%	91%	6-7	0%	0,54	0,92
9192	black	✓	✓	3%	0%	97%	2%	0%	98%	6-7	0%	0,56	0,95

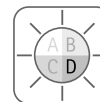
All printed colours and textures only provide orientation and are not reference pattern.

Usable for Roller Blinds / Panel Track
 Colour Range 8
 Composition 100 % PES
 Width 2000 / 3000 mm
 Cutting Process cold
 Processing Direction warp & weft

Weight 360 g/m²
 Thickness 0,55 mm
 Moisture proofed yes
 PVC free yes
 Halogen free yes
 OekoTex yes



suitable for Workstations



D black-out



REACH-compliant



by Gerhard van Clewe GmbH & Co.KG



Standard 100 by Oeko-Tex®

R = Reflection, T = Transmission, A = Absorption • All light & solar properties have been tested internally or externally. • Gtot: measure total solar energy that passes through the glazing system and the fabric • FC value: Relation between the total energy transmittance of glazing combined with the sun shading device gtot in combination with total energy transmittance of glazing g • Gtot and FC-value are calculated on the basis of a glass with an Ug-value of 1,2 and g-value of 0,59 according to DIN EN 14501 glass C. • All technical properties are subjected to production-related deviations. All fabrics are in line with the REACH regulation.